

# RM416

## 4U 48-Bay 2.5" HDD Storage Server Chassis



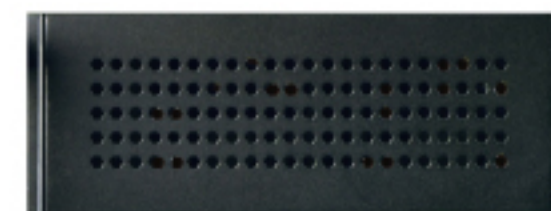
Rear View



Inside View



Front View



Optional Blank Cover



Optional Cage1  
12-Bay 2.5" HDDs



Optional Cage2  
4-Bay 2.5" HDDs + Slim ODD



Optional Cage3  
ODD + FDD



Optional Cage4  
4-Bay 3.5" HDDs

### Features & Benefits

- Fully utilized space to support 48 x 2.5" hot-swap HDDs
- Versatile storage configuration with optional modular cages
- Optional chassis management board (CMB) for PWM fan, overheat & PSU alert functions
- Easy-assembly fan bar with anti-vibration design
- Optional SAS expander card (24-port) for storage expansion
- Tylersburg solution compliance

### Specification

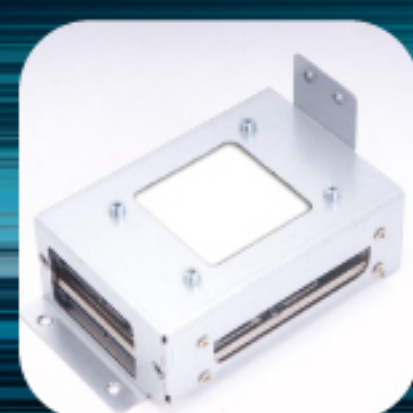
<b>Model Name</b>	• RM41648
<b>M/B Form Factor</b>	• Extended ATX (12" x 13"), CEB (12" x 10.5"), ATX (12" x 9.6")
<b>Dimension (D×W×H)</b>	• 660 mm × 430 mm × 176 mm • 26" × 16.9" × 6.9"
<b>Drive Bay</b>	Standard SKU • Hot-Swap HDD Tray : 2.5" x 48 (With SAS expander board) Option 1 SKU • Internal : 2.5" x 2 (Optional) • Slim ODD : 1 • Hot-Swap HDD Tray : 2.5" x 40 Option 2 SKU • Internal : 2.5" x 2 (Optional) • External : 5.25" x 1, 3.5" x 1 • Hot-Swap HDD Tray : 2.5" x 36
<b>PSU</b>	• Form Factor : 2+1 Redundant • Watt : 1140 W
<b>Indicator</b>	• 1 x Power Status LED, 1 x Fan Failure
<b>Front Control</b>	• Power ON/OFF, System Reset, 2 x USB Ports (Optional)
<b>System Security</b>	• Intrusion Switch
<b>Cooling Fan</b>	• Front : N/A • Middle : 4 x 80 mm (T=38 mm) hot-swap middle fans • Rear : Optional 2 x 80 mm (T=25 mm) rear fans
<b>Slot Opening</b>	• 7
<b>Metal Thickness</b>	• 1.2 mm
<b>Net Weight (Chassis only)</b>	• 19.9 Kg
<b>Gross Weight (w/Packing)</b>	• 24.22 Kg
<b>Backplane</b>	• Mini-SAS
<b>Rear Window</b>	• Standard
<b>Front Bezel</b>	• N/A
<b>Cubic Feet</b>	• 5.92
<b>Container Info. (Single Packing)</b>	• 20' : 170 • 40' : 359 • 40'H : 400



Optional cage for  
ODD + FDD or storage kits



Optional cage for  
4 x 2.5" HDDs + slim ODD  
or SK51102



Optional cage for  
2 x internal 2.5" HDDs



Optional CMB board  
for PWM fan, overheat  
& PSU alert functions



Optional SAS  
expander board



Easy-assembly fan bar  
with anti-vibration rubbers