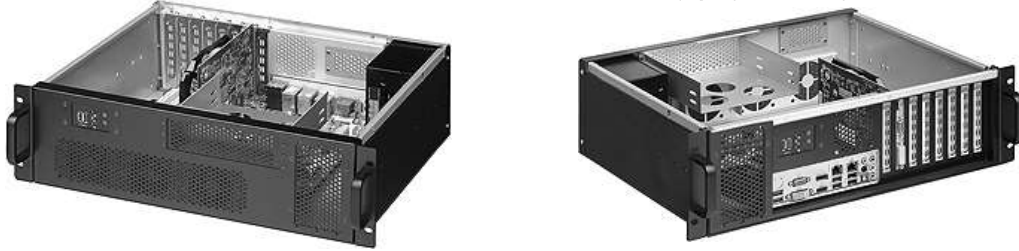
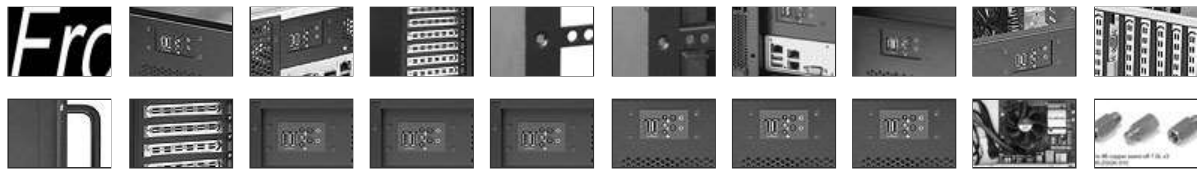


C335B 3U GPU I/O FRONT-REAR ACCESS CHASSIS

Product announcement or 1st production dated on March 27, 2023, webpage updated on May 13, 2024



One of the features of the 3U C335B is that the depth is only 335mm, the I/O and SFX (MicroATX) power supply and the optional hot-swappable SSD/HDD mobile rack can be installed at front or rear side of chassis, even pedestal as a tower chassis is compatible. Less than 280mm depth of Nvidia or other brands of GPU cards are compatible with this 3U chassis very well. The motherboard compatibility accepts maximum CEB 12" x 10.5" or smaller size motherboard also accepted. With its features which can meet the needs of AI high-end computing nowadays. The storage space of this chassis can be installed with 1 set of 5.25" ODD, and optional 2 sets of 3.5" FDD device. The chassis mechanism is made of 1.2mm~2.0mm thick high-strength SGCC sheet metal, the cut surface of all sheet metal parts is designed with smooth hemming to ensure that hands will not be cut. As global quality assurance and warranty for three years, welcome customers all over the world to distribute.



- * Storage space: One 5.25" ODD bay
- * I/O front or rear or pedestal type can be achieved without additional fixing brackets
- * Intake fan (option): 3 60mmx25mm fans installed at filter side under the 5.25" ODD
- * Exhaust fan (option): 1 60mmx25mm fan with fan guard above the top of I/O section
- * Major sheet metal by 1.2mm~2.0mm thickness SGCC ultra-high strength patternless
- * Standard equipped with two USB 3.0 and LAN/HDD/Power LED indicator light display
- * Compatible PSU: SFX (MicroATX) PSU with PFC (D.100 x W.125 x H.63.5 /mm)
- * Compatible MB: CEB1.01 (12"x10.5"), ATX(12"x9.6"), mATX(9.6"x9.6"), ITX(6.7"x6.7")
- * 8-slot rear panel supports 7-slot NVIDIA or other GPU cards (max. 280mm)
- * Standard paint: scratch-resistant Black textured paint on surface of chassis
- * Genesys Group chassis with build-in electronics in global 3 years warranty
- * Chassis dimension: 19" x 3U x 335mm (13.19" deep)
- * Accessory: various screw x54, #6 MB copper stand-off x3, rackmount kit x1, foot x4
- * Package: NW 5.23 KGM, GW 6.71 KGM, 1.92 CUFT (carton size at 55x45x22cm)

Model#	C335B	3U GPU I/O front-rear access chassis
Option A-1	: FSP850-57SBB	SFX FSP 850W power supply with PFC (D.100 x W.125 x H.63.5 /mm)
Option A-2	: MPZ-B001-SFAP-SBU	SFX Cooler Master 1100W power supply with PFC (D.100 x W.125 x H.63.5 /mm)
Option A-3	: MPZ-D001-SFBP-SBU	SFX Cooler Master 1300W power supply with PFC (D.100 x W.125 x H.63.5 /mm)
Option B-1	: SUNTAI6025	Suntai 60mm x 25mm two-ball bearing fan (intake, can install 3 fans under the 5.25" ODD)
Option B-2	: SUNTAI6025-6CM-IRONNRT	Suntai 60mm x 25mm two-ball bearing fan & fan guard (exhaust, can install 1 fan above I/O)
Option C-1	: NJ-600	600mm 2-layer 3-travel universal rail (cabinet internal depth 600~1200mm compliant)
Option C-2	: 1234U-RMK	1234U rear mounting kit
Option D-0	: C335B-35BK	Twin 3.5" FDD bay (two 3.5" FDD devices can be installed in this Twin 3.5" FDD bay)
Option D-1	: RW225-M2	1x3.5" FDD to 2 x M.2 SSD Removable Cage M.2 NVMe 64G
Option D-2	: RW125-NVMe	1x3.5" FDD to 1x2.5" SSD Removable Cage U.2 NVMe 32G
Option D-3	: RW125-12G	1x3.5" FDD to 1x2.5" HotSwap Cage SATA/SAS 12G
Option D-4	: TL125-12G	1x3.5" FDD to 1x2.5" TrayLess HotSwap Cage SATA/SAS 12G
Option D-5	: TL225	1x3.5" FDD to 2x2.5" TrayLess HotSwap Cage SATA/SAS 12G
Option E-1	: RW4M2	1x5.25" to 4 x M.2 SSD Removable Cage M.2 NVMe 64Gbps
Option E-2	: RW8M2	1x5.25" to 8 x M.2 SSD Removable Cage M.2 NVMe 64Gbps
Option E-3	: RW135-12G	1x5.25" to 1x3.5" HotSwap Cage SATA/SAS 12G
Option E-4	: TL135-12G	1x5.25" to 1x3.5" TrayLess HotSwap Cage SATA/SAS 12G
Option E-5	: RW225-NVMe-U	1x5.25" to 2xUSB3 2x2.5" SSD Removable Cage U.2 NVMe 32G
Option E-6	: RW225-NVMe	1x5.25" to 2x2.5" SSD Removable Cage U.2 NVMe 32G
Option E-7	: RW225-12G	1x5.25" to 2x2.5" HotSwap Cage SATA/SAS 12G
Option E-8	: RW625-12G	1x5.25" to 6x2.5" HotSwap Cage SATA/SAS 12G
Option E-9	: RW825-1525	1x5.25" to 8x2.5" HotSwap Cage SATA/SAS 6G
Option E-10	: RW425-NVMe	1x5.25" to 4x2.5" SSD Removable Cage U.2 NVMe 32G
Option E-11	: RW425-12G-MS	1x5.25" to 4x2.5" HotSwap Cage SFF-8643 12G
Option E-12	: RW425-12G	1x5.25" to 4x2.5" HotSwap Cage SATA/SAS 12G
Option E-13	: RW425	1x5.25" to 4x2.5" HotSwap Cage SATA/SAS 6G
Option F-1	: 1MSAS-4SATA-500MM	SFF-8087 Mini-SAS (Host) to Four SATA (Device) cable
Option F-2	: SFF-8643-500MM	SFF-8643 Mini-SAS HD (Host) to SFF-8643 Mini-SAS HD (Device) cable
Option F-3	: 4SATA-SFF-8643-500MM	Four SATA (Host) to SFF-8643 Mini-SAS HD (Device) cable
Option F-4	: SFF-8643-4SATA-500MM	SFF-8643 Mini-SAS HD (Host) to Four SATA (Device) cable
Option G-1	: 2U2011A-8080	2U Intel LGA2011 LGA2066 active CPU cooler Square (2U 3U 4U chassis compatible)
Option G-2	: 2U2011A-5694	2U Intel LGA2011 active CPU cooler Narrow (2U 3U 4U chassis compatible)
Option G-3	: 2U115XA	2U Intel LGA115x Xeon 1230 active CPU cooler (2U 3U 4U chassis compatible)
Option G-4	: 2U4094A-SP3	2U AMD EPYC LGA4094 active CPU cooler SP3 (2U 3U 4U chassis compatible)
Option G-5	: 2U1718A-AM5	2U AMD AM4 AM5 active CPU cooler (2U 3U 4U chassis compatible)
Option G-6	: 2U3647A-S82	2U Intel LGA3647 active CPU cooler Square (2U 3U 4U chassis compatible)
Option G-7	: 2U3647A-R82-1	2U Intel LGA3647 active CPU cooler Narrow (2U 3U 4U chassis compatible)
Option G-8	: 2U4189A-M82	2U Intel LGA4189 active CPU cooler (2U 3U 4U chassis compatible)
Option G-9	: 2U1700A-V15	2U Intel LGA1700 active CPU cooler (2U 3U 4U chassis compatible)

GeneSys Group Corporation copyright reserved © Year 1989~2024 Without official document authorized by our company, any commercial behaviors including product design, photograph and specification description are prohibited